

SeeNoEvil

Quick Start Guide 2.0



Installation

To install SeeNoEvil complete the following steps:

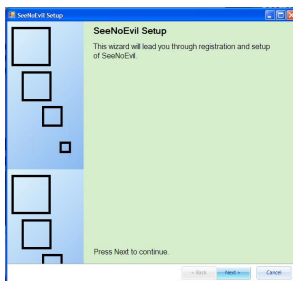


- You may download the latest version of SeeNoEvil from www.SeeNoEvil.com.
- Run the installation file.
- The SeeNoEvil Installer will setup all of the required See No Evil and system files on your computer. (If this does not automatically open, run SeeNoEvil from your computer).

- The SeeNoEvil initial setup wizard will guide you through installing SeeNoEvil
- After completing the SeeNoEvil Online Setup Wizard you will be asked to restart.

Note: Make sure to reboot your computer after installing SeeNoEvil. Not doing this may cause problems when you start SeeNoEvil for the first time!

- After your computer restarts you will be asked to begin the initial SeeNoEvil setup process. This may take a moment.
- First you will be asked if you already have a SeeNoEvil account or if you are a new user. (If you are a current SeeNoEvil user, SeeNoEvil will import your SeeNoEvil users, if not you will begin the setup process for your SeeNoEvil users).



- Now you will need to setup a Parent User for your machine. Parent users are the only users that can change SeeNoEvil settings and have the ability to monitor and control security levels for non-parental users.
- **Please write down your password in a safe place. If you lose your password, you will get locked out of windows!**
- SeeNoEvil allows you to create a “Backup Administrator”

account in case your main Parent User gets disabled or locked out of Windows. This account will have the same password as your parent user, though you will not be able to edit it.

- **Making the backup administrator is highly recommended!**
- Next you will need to determine a level of security for your user:

None:

No Filtering of Images

Low:

All known pornographic sites will be blocked by SeeNoEvil. All other sites and images will not be blocked.

Medium:

Images will show on sites you determine are OK, all other images will be blocked

High:

Only sites you determined are ok can be viewed and accessed.

- After choosing a security level for your user, click on **Next**.
- Congratulations, you have successfully installed SeeNoEvil. Click on **Finish** (Next you will be prompted to the SeeNoEvil login screen if you choose the SeeNoEvil login screen for user authorization).

Unblocking Images

To unblock all images for a browsing session:

- Login as parental user
- Right Click on the SeeNoEvil icon at the bottom of your screen
- Click on **Pause web filtering**



- Open your internet browser
- Locate the SeeNoEvil toolbar directly below your browser toolbar
- Click Mode, then Parent Mode
- Enter User Name and Password
- The background of the Mode icon will turn red. You are now in Parent Mode
- **Image Options**

Now click on Images in the SeeNoEvil Toolbar

Now you will have several options:

Show All on Page

Clicking this option will reveal all blocked images on your current page. If Vic still appears to be blocking some images, press Ctrl&F5 to refresh.

Hide All on Page

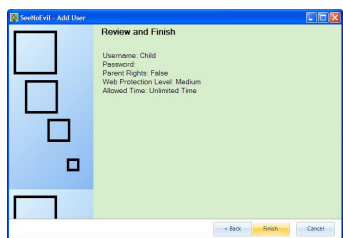
This option will quickly re-block all images on the page with Vic.

Adding a New User



• Open the Main See No Evil control panel from the start menu or by double clicking on Vic in your bottom right hand toolbar, then select **Add User** in the menu

• Please enter the name and password for the new user
Click **Parental Rights** if you want the user to be able to modify SeeNoEvil settings, change and add users, and shut down SeeNoEvil.



Next determine a web filter level for the user:

None:

No blocking of Images

Low:

Known pornographic websites will be blocked

Medium:

Images will show on sites you determine are OK, all other

images will be blocked

High:

Only sites you determined are ok can be viewed and accessed.

• Review and finish and click close

